

Lesson 2 Invertebrate Terminology.notebook

Animal Kingdom Terminology

Invertebrate - no backbone - 95% of the animals

Vertebrate - has a backbone

Intracellular digestion - occurs inside the cells
- ex. sponges

Extracellular digestion occurs outside the cells in a digestive cavity or tract..the nutrients are then absorbed by the cells.

Open circulatory system - blood is only partially contained in vessels...blood comes into direct contact with tissue

Closed Circulatory system - blood stays in blood vessels and nutrients diffuse out to reach tissues

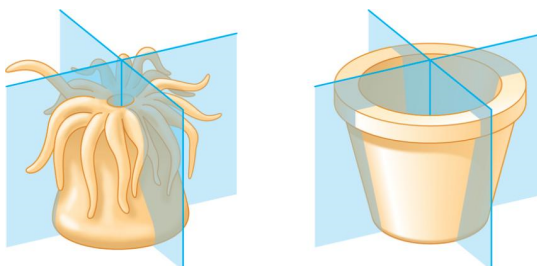
Exoskeleton - skeleton is on the outside of the body...harder for the organism to move and grow

Endoskeleton - inside of the body

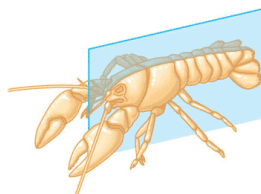
External Fertilization - eggs are released from female before they are fertilized

Internal Fertilization - eggs are fertilized inside female

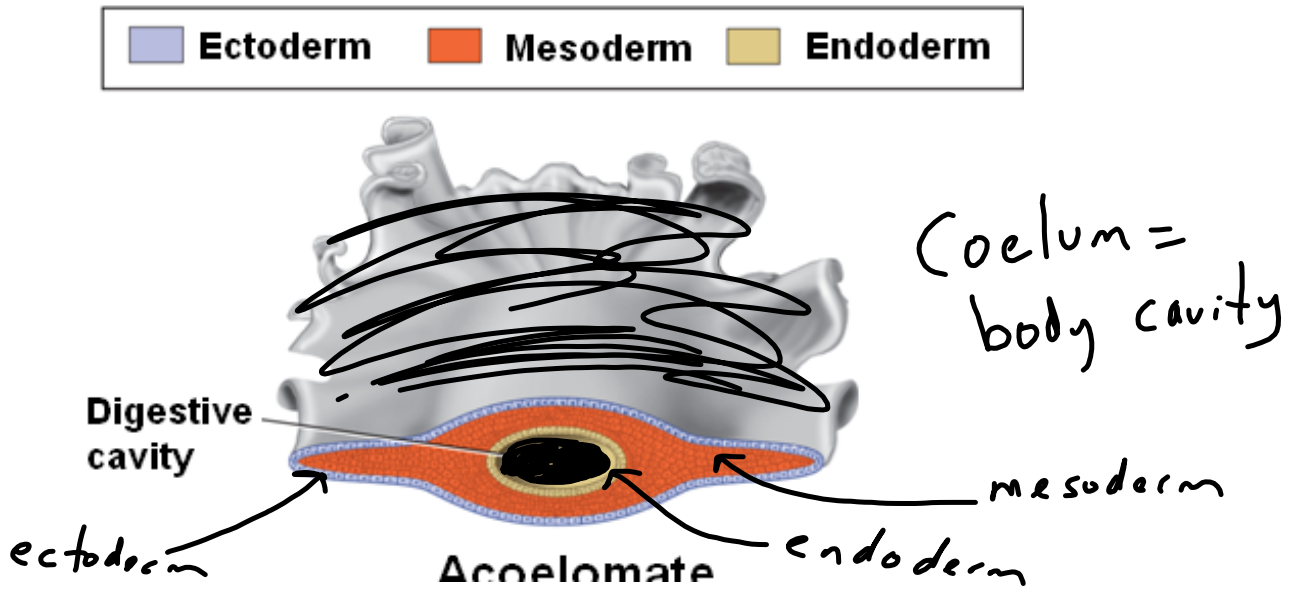
Radial Symmetry - body is arranged around a central axis



Bilateral Symmetry - have distinct left and right sides

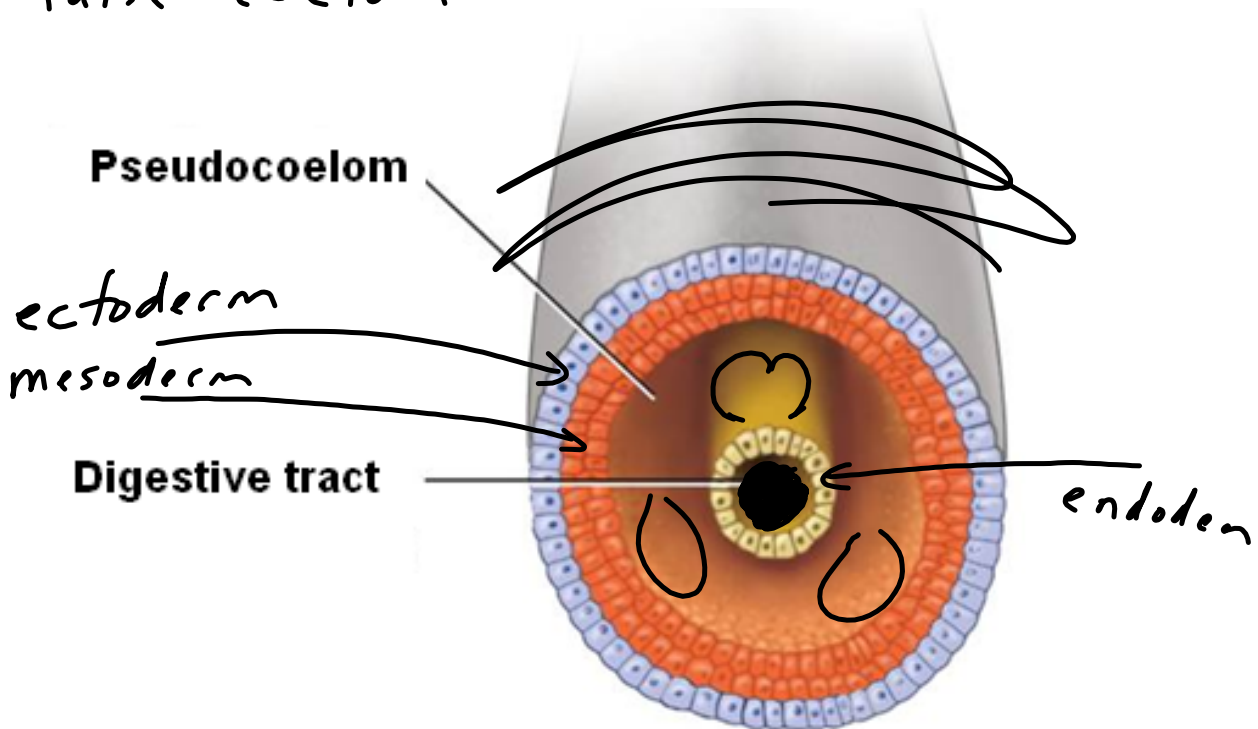


Acoelomate - an organism without a body cavity

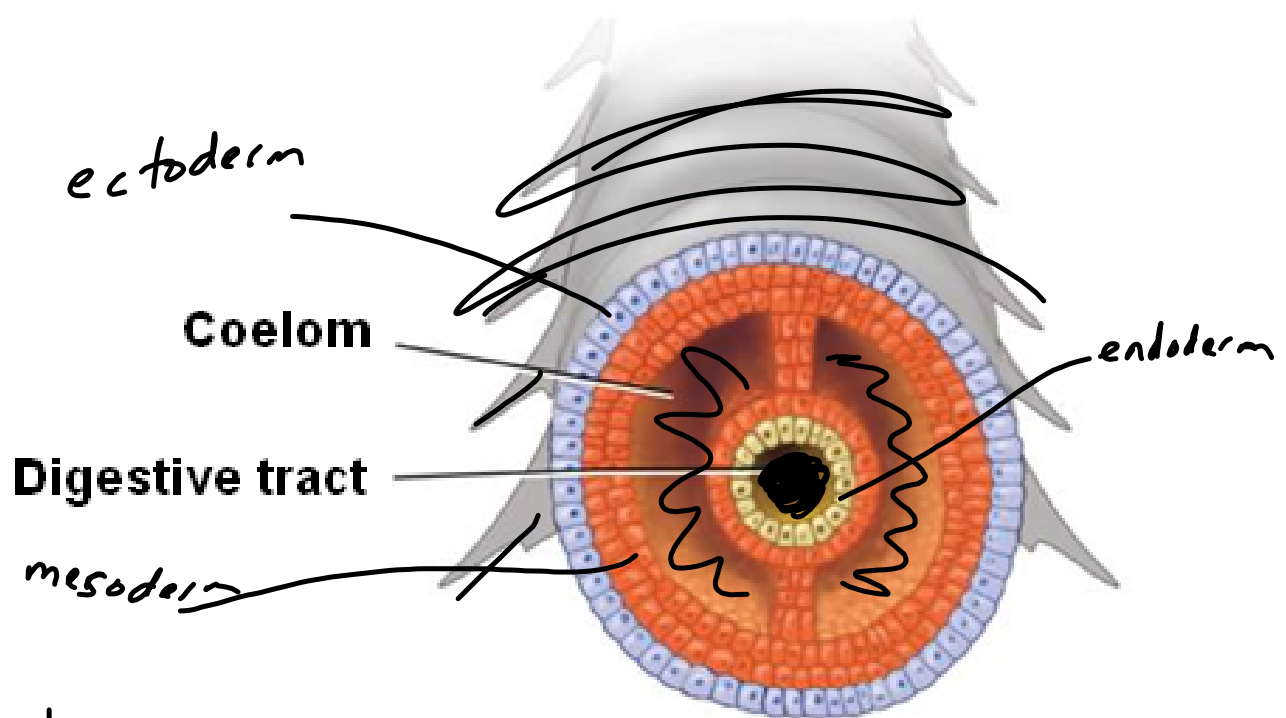


Pseudocoelomate - a partially lined body cavity

False coelum



Coelomate - a true fluid filled cavity lined with mesoderm



1